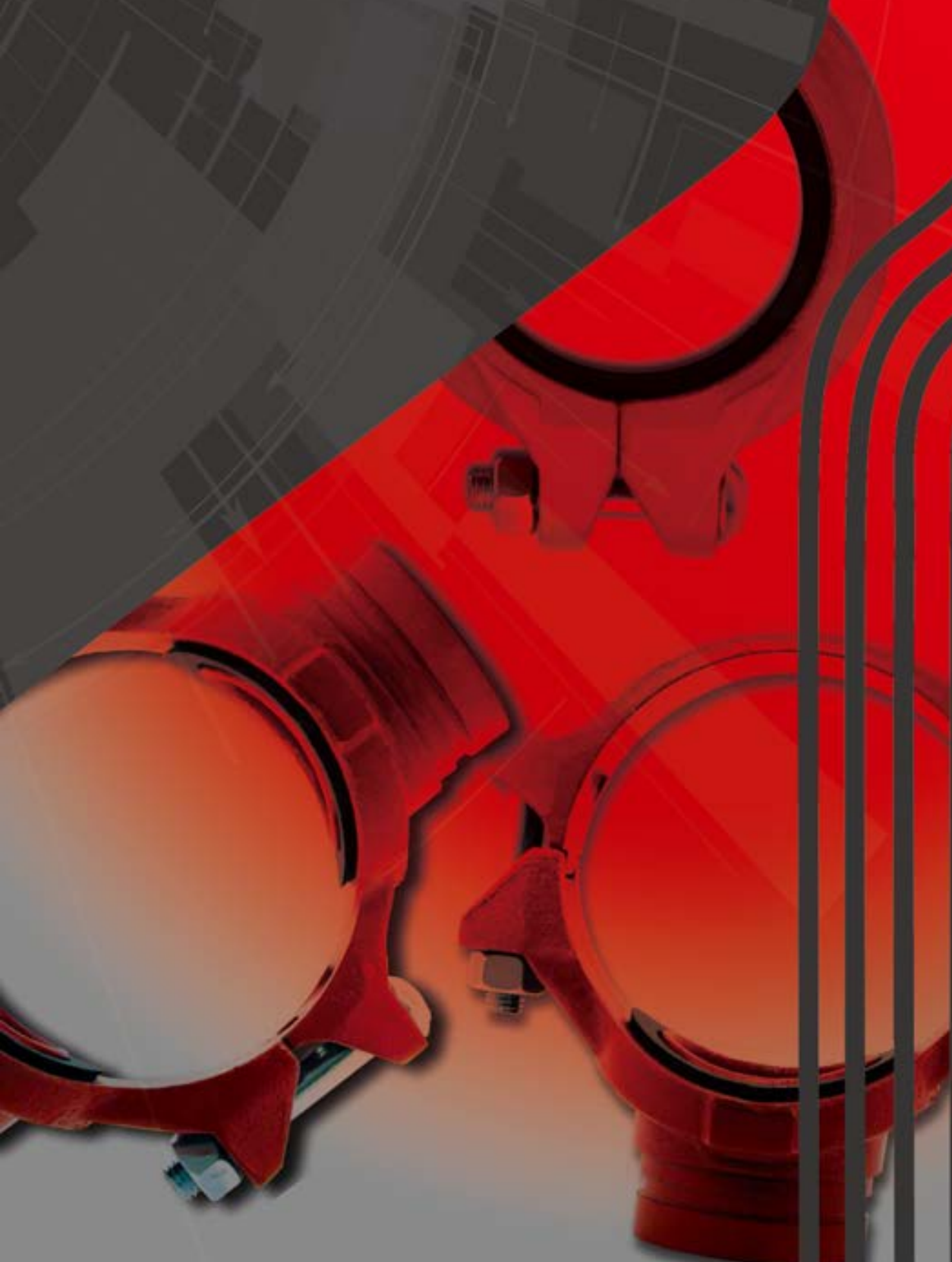


梅花牌溝槽管件





認證 證書

Certificates



the standard in safety

Underwriters
Laboratories

File EX6464
Project 03NK17245/EX6097
Project 04HG20304
Project 05NK28662
Project 06NK13693
Project 08CA38488
Project 09CA17524
Project 10NK10634

Issued: March 03, 2004
Revised: February 24, 2011

REPORT

on

FITTINGS, RUBBER GASKETED
Jinan Meide Casting Co. Ltd.
Shandong, CHINA

Copyright © 2004 Underwriters Laboratories Inc.

Underwriters Laboratories Inc. authorizes the above named company to reproduce this Report provided it is reproduced in its entirety.

球墨鑄鐵溝槽管件

Ductile iron grooved fitting

主要產品表面處理為 S: 噴塗 Epoxy

產品介紹：

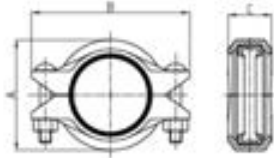
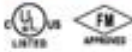
- 撓性接頭：撓性接頭可提供管線熱脹冷縮自動調節，以及管線偏斜自動調節等功能。適合應用於垂直（立）管，可吸收地震或其他外力的撞擊，減緩管道的震動與噪音。
- 剛性接頭：剛性接頭可提供一般及大尺寸的夾持，適合應用於水準（橫）管，能消除或減低管道不必要的角度位移及線性位移與旋轉，使其管路能平行或直線，避免加壓後造成蛇管。

 <p>C1 撓性接頭</p>	 <p>F11 輕型撓性接頭</p>	 <p>R1 剛性接頭</p>	 <p>R11 輕型剛性接頭</p>	 <p>E1 彎頭</p>
 <p>EL 短徑 90°彎頭</p>	 <p>E4 45°彎頭</p>	 <p>T 三通</p>	 <p>TL 短徑三通</p>	 <p>RT 異徑三通</p>
 <p>TT 螺紋式三通</p>	 <p>MT2 溝槽式機械三通</p>	 <p>MT3 螺紋式機械三通</p>	 <p>RC 溝槽式大小頭</p>	 <p>RC1 溝槽內螺紋式大小頭</p>
 <p>CP 管帽</p>	 <p>AFJ10 10K 級高壓法蘭</p>	 <p>AFJ16 16K 級高壓法蘭</p>		

C1

撓性接頭

Standard Flexible Coupling

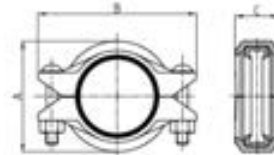


規格 mm/in	管子基本尺寸 mm/in	工作壓力 PSI/MPa	最大管端負荷 kN/Lbs	允許管端間隙 mm/in	尺寸			螺栓規格 與數量 mm
					A mm/in	B mm/in	C mm/in	
50 2	60.3 2.375	300 2.07	9.8/2210	0-3.2 0-0.13	83 3.27	125 4.92	44 1.74	2-3/8×55 2-M10×57
65 2½	76.1 3.000	300 2.07	15.7/3520	0-3.2 0-0.13	100 3.94	145 5.71	45 1.78	2-3/8×55 2-M10×57
80 3	88.9 3.500	300 2.07	21.4/4810	0-3.2 0-0.13	115 4.53	160 6.30	45 1.78	2-1/2×70 2-M12×70
100 4	114.3 4.500	300 2.07	35.4/7960	0-3.2 0-0.13	145 5.71	198 7.80	50 1.97	2-1/2×70 2-M12×70
125 5	139.7 5.500	450 3.10	52.9/11800	0-3.2 0-0.13	169 6.65	230 9.06	52 2.05	2-5/8×80 2-M16×85
150 6	165.1 6.500	300 2.07	73.8/16610	0-3.2 0-0.13	196 7.72	260 10.24	52 2.05	2-5/8×85 2-M16×85
200 8	216.3 8.516	300 2.07	76.0/17100	0-3.2 0-0.13	254 10.00	320 12.60	59 2.32	2-5/8×85 2-M16×85

F11

輕型撓性接頭

Light-duty Flexible Coupling

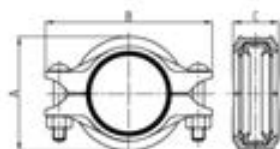
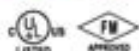


規格 mm/in	管子基本尺寸 mm/in	工作壓力 PSI/MPa	最大管端負荷 kN/Lbs	允許管端間隙 mm/in	尺寸			螺栓規格 與數量 mm
					A mm/in	B mm/in	C mm/in	
100 4	114.3 4.500	300 2.07	21.2/4770	0-3.2 0-0.13	139 5.47	162 7.16	50 1.97	2-3/8×55 2-M10×57
125 5	139.7 5.500	450 3.10	47.5/10680	0-3.2 0-0.13	168 6.61	228 8.98	51 2.01	2-5/8×80 2-M16×85
165 6	165.1 6.500	300 2.07	44.3/9960	0-3.2 0-0.13	192 7.56	244 9.61	51 2.01	2-1/2×75 2-M12×76

註：除上述尺寸外，若需其他尺寸及樣式也可以依客戶要求生產，詳情請與本公司聯絡。

R1

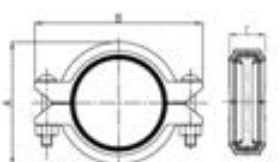
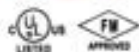
剛性接頭
Standard
Rigid Coupling



規格 mm/in	管子基本尺寸 mm/in	工作壓力 PSI/MPa	最大管端負荷 kN/Lbs	允許管端間隙 mm/in	尺寸			螺栓規格 與數量 mm
					A mm/in	B mm/in	C mm/in	
50 2	60.3 2.375	300 2.07	9.8/2210	0-3.2 0-0.13	85 3.35	131 5.16	45 1.78	2-3/8X55 2-M10X57
65 2½	76.1 3.000	500 3.45	15.7/3520	0-3.2 0-0.13	101 3.98	147 5.78	45 1.78	2-3/8X55 2-M10X57
80 3	88.9 3.500	300 2.07	21.4/4810	0-3.2 0-0.13	115.0 4.53	170 6.69	46 1.82	2-1/2X70 2-M12X70
100 4	114.3 4.500	300 2.07	35.4/7960	0-3.2 0-0.13	146 5.75	200 7.88	52 2.05	2-1/2X70 2-M12X70
125 5	139.7 5.500	450 3.10	52.9/11800	0-3.2 0-0.13	170 6.69	238 9.37	52 2.05	2-5/8X85 2-M16X85
150 6	165.1 6.500	300 2.07	73.8/16610	0-3.2 0-0.13	198 7.80	266 10.47	52 2.05	2-5/8X85 2-M16X85

R11

輕型剛性接頭
Light-duty
Rigid Coupling



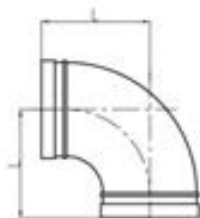
規格 mm/in	管子基本尺寸 mm/in	工作壓力 PSI/MPa	最大管端負荷 kN/Lbs	允許管端間隙 mm/in	尺寸			螺栓規格 與數量 mm
					A mm/in	B mm/in	C mm/in	
80 3	88.9 3.500	300 2.07	15.0/3360	0-3.2 0-0.13	114 4.50	160 6.30	45 1.78	2-3/8X55 2-M10X57
100 4	114.3 4.500	300 2.07	24.7/5560	0-3.2 0-0.13	140 5.51	192 7.56	46.5 1.83	2-1/2X70 2-M12X70
125 5	139.7 5.500	300 2.07	36.9/8300	0-3.2 0-0.13	168 6.62	225 8.86	50 1.97	2-1/2X75 2-M12X76
150 6	165.1 6.500	300 2.07	51.6/11600	0-3.2 0-0.13	195 7.68	250 9.84	50 1.97	2-1/2X75 2-M12X76
200A 8	216.3 8.516	300 2.07	76.0/17100	0-3.2 0-0.13	255 10.04	320 12.60	58 2.28	2-5/8X85 2-M16X85

註：除上述尺寸外，若需其他尺寸及樣式也可以依客戶要求生產，詳情請與本公司聯絡。



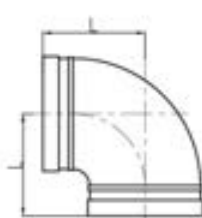
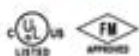
E1

彎頭
90° Elbow



EL

短徑 90°彎頭
Light-duty 90° Elbow



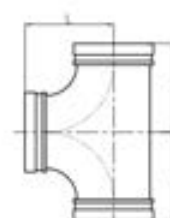
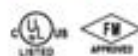
E4

45° 彎頭
45° Elbow



T

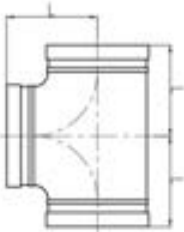
三通
Tee



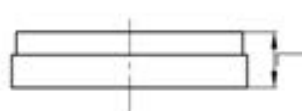
規格 mm/in	管子基本尺寸 mm/in	尺寸 L (mm/in)			
		E1	EL	E4	T
50 2	60.3 2.375	82.5 3.25	70 2.75	51 2.00	82.5 3.25
65 2½	76.1 3.000	95 3.74	76 3.00	57 2.24	95 3.74
80 3	88.9 3.500	108 4.25	85.5 3.37	63.5 2.50	108 4.25
100 4	114.3 4.500	127 5.00	101 3.98	76 3.00	127 5.00
125 5	139.7 5.500	140 5.50	124 4.88	82.5 3.25	140 5.50
150 6	165.1 6.500	165 6.50	140 5.50	89 3.50	165 6.50
200 8	216.3 8.516	—	175 6.89	108 4.25	—

註：除上述尺寸外，若需其他尺寸及樣式也可以依客戶要求生產，詳情請與本公司聯絡。

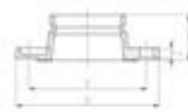
TL
短徑三通
Light-duty Tee



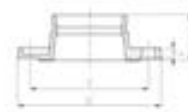
CP
管帽
Cap



AFJ10
AFJ10、JIS
10K 級高頸法蘭
Adaptor Flange



AFJ16
AFJ16、JIS
16K 級高頸法蘭
Adaptor Flange



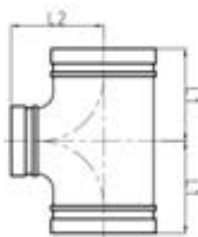
規格 mm/in	管子基本尺寸 mm/in	尺寸 L (mm/in)			
		TL	CP	AFJ10	AFJ16
50 2	60.3 2.375	70 2.75	23.5 0.93	—	—
65 2½	76.1 3.000	76 3.00	24.5 0.96	65 2.559	—
80 3	88.9 3.500	85.5 3.37	24 0.94	65 2.559	65 2.559
100 4	114.3 4.500	101 3.98	27 1.06	70 2.756	70 2.756
125 5	139.7 5.500	124 4.88	25.5 1.00	70 2.756	—
150 6	165.1 6.500	140 5.50	27 1.06	70 2.756	70 2.756
200 8	216.3 8.516	175 6.89	30 1.18	—	—

註：除上述尺寸外，若需其他尺寸及樣式也可以依客戶要求生產，詳情請與本公司聯絡。



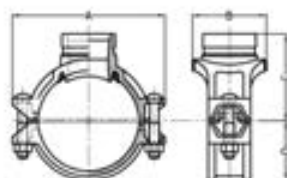
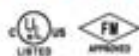
RT

異徑三通
Reducing Tee



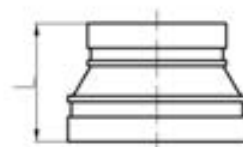
MT2

溝槽式機械三通
Mechanical Tee
Grooved Outlet



RC

溝槽式大小頭
Grooved Concentric
Reducer

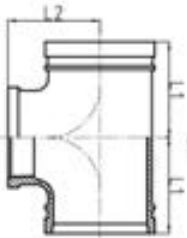


規格 mm/in	管子基本尺寸 mm/in	TR 尺寸 (mm/in)		MT2 尺寸 (mm/in)		RC 尺寸 (mm/in)
		L 1	L 2	A	B	L
3×2-1/2"	88.9×76.1 3.500×3.000	85.5	85.5	—	—	64
4×2-1/2"	114.3×76.1 4.500×3.000	101	101	188	104.5	76
4×3"	114.3×88.9 4.500×3.500	101	101	188	128	76
5×2-1/2"	129.7×76.1 5.500×3.000	124	124	221.5	112.5	89
5×3"	129.7×88.9 5.500×3.500	124	124	221.5	132	89
5×4"	129.7×114.3 5.500×4.500	124	124	221.5	160	89
6×2-1/2"	165.1×76.1 6.500×3.000	140	140	244	112.5	102
6×3"	165.1×88.9 6.500×3.500	140	140	244	132	102
6×4"	165.1×114.3 6.500×4.500	140	140	244	154	102
6×5"	165.1×129.7 6.500×5.500	140	140	—	—	102
8×6"	218.3×165.1 8.516×6.500	175	175	—	—	127

註：除上述尺寸外，若需其他尺寸及樣式也可以依客戶要求生產，詳情請與本公司聯絡。

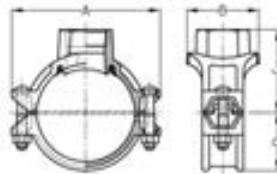
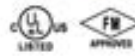
TT

螺紋式三通
Reducing Tee
with Female Thread



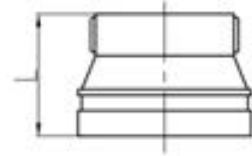
MT3

螺紋式機械三通
Mechanical Tee
Threaded Outlet



RC1

溝槽內螺紋式大小頭
Grooved Concentric
Reducer with
Female Thread



規格 mm/in	管子基本尺寸 mm/in	TT 尺寸 (mm/in)		MT3 尺寸 (mm/in)		RC1 尺寸 (mm/in)
		L 1	L 2	A	B	L
2-1/2×1"	76.1×33.7 3,000×1,315	76	76	137	71	64
2-1/2×1-1/4"	76.1×42.4 3,000×1,660	76	76	137	84.5	64
2-1/2×1-1/2"	76.1×48.3 3,000×1,900	76	76	137	84.5	64
3×1"	88.9×33.7 3,500×1,315	85.5	85.5	152	72.5	64
3×1-1/4"	88.9×42.4 3,500×1,660	85.5	85.5	152	85.5	64
3×1-1/2"	88.9×48.3 3,500×1,900	85.5	85.5	152	85.5	64
3×2"	88.9×60.3 3,500×2,375	85.5	85.5	152	98	64
4×1-1/2"	114.3×48.3 4,500×1,900	85	91	188	89	76
4×2-1/2"	114.3×76.1 4,500×3,000	100	96	188	104.5	76
5×2"	139.7×60.3 5,500×2,375	86	106	221.5	112.5	89
6×2"	165.1×60.3 6,500×2,375	92	124	244	112.5	102

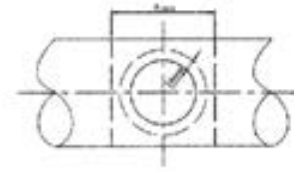
註：除上述尺寸外，若需其他尺寸及樣式也可以依客戶要求生產，詳情請與本公司聯絡。

機械三通開孔尺寸表

Hole Diameter of pipe



管道鑽孔機
Hole-cutting Machine



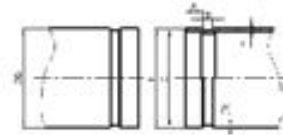
Run Nominal Size mm/in	Outlet Nominal Size mm/in	Hole Dia. +3.2,0+0.13,0 mm/in	Run Nominal Size mm/in	Outlet Nominal Size mm/in	Hole Dia. +3.2,0+0.13,0 mm/in	Run Nominal Size mm/in	Outlet Nominal Size mm/in	Hole Dia. +3.2,0+0.13,0 mm/in
主管公稱尺寸	支管公稱尺寸	開孔直徑	主管公稱尺寸	支管公稱尺寸	開孔直徑	主管公稱尺寸	支管公稱尺寸	開孔直徑
25 1"03.7	10 3/8	23.5 0.925 A89	80 3"06.9	15 1/2	38 1.50 A89	150 5.90 165.1 6"168.3	15 1/2	38 1.50 A89
	15 1/2			20 3/4			20 3/4	
	20 3/4			25 1			25 1	
	25 1			32 1 1/4			32 1 1/4	
	10 3/8			40 1 1/2			40 1 1/2	
32 1 1/4"42.4	15 1/2	30 1.18 A89	100 3.94 4"154.3	50 2	64 2.50 A114	200 7.87 19"273.0	50 2	64 2.50 A114
	20 3/4			65 2 1/2			65 2 1/2	
	25 1			70 2.75 A120			70 2.75 A120	
	10 3/8			80 3			80 3	
	15 1/2			89 3.50 A140			89 3.50 A140	
40 1 1/2"48.3	15 1/2	30 1.18 A89	125 4.92 5"141.3	32 1 1/4	51 2.00 A102	250 9.84 19"273.0	32 1 1/4	51 2.00 A102
	20 3/4			40 1 1/2			40 1 1/2	
	25 1			50 2			50 2	
	15 1/2			65 2 1/2			65 2 1/2	
	20 3/4			70 2.75 A120			70 2.75 A120	
50 2"60.3	20 3/4	38 1.50 A89	125 4.92 5"141.3	80 3	89 3.50 A140	250 9.84 19"273.0	80 3	89 3.50 A140
	25 1			89 3.50 A140			89 3.50 A140	
	32 1 1/4			100 3.94 4"154.3			100 3.94 4"154.3	
	40 1 1/2			114 4.50 A165			114 4.50 A165	
	15 1/2			114 4.50 A165			114 4.50 A165	
65 2 1/2"73.0 76.1	15 1/2	38 1.50 A89	125 4.92 5"141.3	32 1 1/4	51 2.00 A102	250 9.84 19"273.0	32 1 1/4	51 2.00 A102
	20 3/4			40 1 1/2			40 1 1/2	
	25 1			50 2			50 2	
	32 1 1/4			65 2 1/2			65 2 1/2	
	40 1 1/2			70 2.75 A120			70 2.75 A120	

在開孔周邊16mm範圍內管件外表必須保持光滑無毛刺，A尺寸範圍內管子無損傷
The outside surface of the pipe within 16mm from the hole must be clean and smooth.

鋼管軋槽尺寸表
Roll Groove Dimensions



滾槽機
Roll Grooving Machine



規格 Nominal Size mm/in	管外徑 Pipe OD		密封面寬度A Gasket seat A ±0.76/±0.03 mm/in	槽寬B Groove Width B ±0.76/±0.03 mm/in	槽底直徑 C Groove Dia C		槽深D(參考) Groove Depth D(ref) mm/in	最大伸張面F Max Allow Flare Dia F mm/in	管壁最小壁厚T Min. Allow wall thickness T mm/in
	標準 Basic mm/in	公差 Tolerance mm/in			標準 Basic mm/in	公差 Tolerance mm/in			
25 1	33.7 1.327	+0.41 -0.68	15.88 0.625	7.14 0.281	30.23 1.190	-0.38 -0.015	1.60 0.063	34.5 1.358	1.8 0.071
32 1 1/4	42.4 1.669	+0.30 -0.60	15.88 0.625	7.14 0.281	38.99 1.535	-0.38 -0.015	1.60 0.063	43.3 1.705	1.8 0.071
40 1 1/2	48.3 1.900	+0.44 -0.68	15.88 0.625	7.14 0.281	48.09 1.775	-0.38 -0.015	1.60 0.063	48.4 1.945	1.8 0.071
50 2	60.3 2.375	+0.61 -0.61	15.88 0.625	8.74 0.344	57.15 2.250	-0.38 -0.015	1.60 0.063	62.2 2.449	1.8 0.071
65 2-1/2	73.0 2.875	+0.74 -0.62	15.88 0.625	8.74 0.344	69.09 2.720	-0.46 -0.018	1.98 0.078	75.2 2.961	2.3 0.091
80 3	86.1 3.390	+0.76 -0.60	15.88 0.625	8.74 0.344	72.26 2.845	-0.46 -0.018	1.98 0.078	77.7 3.059	2.3 0.091
100 4	108.0 4.250	+1.07 -0.61	15.88 0.625	8.74 0.344	103.73 4.084	-0.51 -0.020	2.11 0.083	109.7 4.319	2.3 0.091
125 5	133.0 5.250	+1.32 -0.61	15.88 0.625	8.74 0.344	129.13 5.084	-0.51 -0.020	2.11 0.083	134.9 5.311	2.9 0.114
150 6	159.0 6.250	+1.60 -0.61	15.88 0.625	8.74 0.344	154.50 6.083	-0.56 -0.022	2.18 0.085	161.0 6.339	2.9 0.114
175 7	185.1 7.300	+1.60 -0.61	15.88 0.625	8.74 0.344	180.8 7.120	-0.56 -0.022	2.18 0.085	187.1 7.367	2.9 0.114
200 8	211.9 8.343	+1.60 -0.61	15.88 0.625	8.74 0.344	207.1 8.157	-0.56 -0.022	2.18 0.085	213.2 8.394	2.9 0.114
225 9	238.1 9.374	+1.60 -0.61	15.88 0.625	8.74 0.344	233.4 9.189	-0.56 -0.022	2.18 0.085	239.5 9.429	2.9 0.114
250 10	264.3 10.390	+1.60 -0.61	15.88 0.625	8.74 0.344	259.7 10.225	-0.56 -0.022	2.18 0.085	265.8 10.465	2.9 0.114
275 11	290.5 11.433	+1.60 -0.61	15.88 0.625	8.74 0.344	286.0 11.256	-0.56 -0.022	2.18 0.085	292.1 11.501	2.9 0.114
300 12	316.7 12.470	+1.60 -0.61	15.88 0.625	8.74 0.344	312.3 12.291	-0.56 -0.022	2.18 0.085	318.4 12.534	2.9 0.114
325 13	342.9 13.500	+1.60 -0.61	15.88 0.625	8.74 0.344	338.6 13.326	-0.56 -0.022	2.18 0.085	344.7 13.569	2.9 0.114
350 14	369.1 14.530	+1.60 -0.61	15.88 0.625	8.74 0.344	364.9 14.357	-0.56 -0.022	2.18 0.085	371.0 14.604	2.9 0.114
375 15	395.3 15.560	+1.60 -0.61	15.88 0.625	8.74 0.344	391.2 15.388	-0.56 -0.022	2.18 0.085	397.3 15.639	2.9 0.114
400 16	421.5 16.590	+1.60 -0.61	15.88 0.625	8.74 0.344	417.5 16.419	-0.56 -0.022	2.18 0.085	423.6 16.674	2.9 0.114
425 17	447.7 17.620	+1.60 -0.61	15.88 0.625	8.74 0.344	443.8 17.450	-0.56 -0.022	2.18 0.085	449.9 17.709	2.9 0.114
450 18	473.9 18.650	+1.60 -0.61	15.88 0.625	8.74 0.344	470.1 18.481	-0.56 -0.022	2.18 0.085	476.2 18.744	2.9 0.114
475 19	500.1 19.680	+1.60 -0.61	15.88 0.625	8.74 0.344	496.4 19.512	-0.56 -0.022	2.18 0.085	502.5 19.779	2.9 0.114
500 20	526.3 20.710	+1.60 -0.61	15.88 0.625	8.74 0.344	522.7 20.543	-0.56 -0.022	2.18 0.085	528.8 20.814	2.9 0.114
525 21	552.5 21.740	+1.60 -0.61	15.88 0.625	8.74 0.344	549.0 21.574	-0.56 -0.022	2.18 0.085	555.1 21.849	2.9 0.114
550 22	578.7 22.770	+1.60 -0.61	15.88 0.625	8.74 0.344	575.3 22.605	-0.56 -0.022	2.18 0.085	581.4 22.884	2.9 0.114
575 23	604.9 23.800	+1.60 -0.61	15.88 0.625	8.74 0.344	601.6 23.636	-0.56 -0.022	2.18 0.085	607.7 23.919	2.9 0.114
600 24	631.1 24.830	+1.60 -0.61	15.88 0.625	8.74 0.344	627.9 24.667	-0.56 -0.022	2.18 0.085	634.0 24.954	2.9 0.114



PLUMNECT



兆右管材另件股份有限公司

CHAO YOU PIPE & FITTING LTD.

